



WELCOME TO A YEAR OF ADVENTURE S IN LEARNING

Dear Parents and Community Supporters,

We are excited about this year; another fabulous opportunity to meet so many new families and welcome back former students, their parents, our friends and supporters. Many of you have already remarked that the summer raced past. Others have shared their children are ready for a new year and eagerly await the challenge of a new program.

Certainly we anticipate some changes in our school organization, our staffing and class placement again this September. Many schools in Chilliwack are facing a similar situation with new arrivals, family movement and community growth.

We are accommodating this, ensuring minimum disruption through our annual GRADE LEVEL GROUPINGS during the first week of school. Children will gather as a grade level group and then be divided into a temporary division. These Divisions / staff assignments will change throughout the week.

You can assist us ensuring your child returns to the grade level group on day 2 for a regular school day / regular hours. (First bell 8:40 a.m. / in session 8:45 a.m.– Dismissal 2:30 p.m.)

We will be working with all students during the first week acquainting them with our school's Effective Behavioural Support Plan, our S.H.A.R.K. acronym and school-wide expectations. It is an annual orientation program to ensure everyone is aware of what behaviours are "right and good" for folks at Central. This information will serve them well as students of Central.

You may even find them bringing home a "FINTASTIC" certificate for getting "caught doing something right." We appreciate appropriate behaviours and recognize them whenever possible.

Should you have any questions as we begin this year, we look forward to answering them. Please direct them to Mr. Dougans, (Principal), Mr. Wallace (Vice-Principal) or any member of our office staff.

Again welcome and our very best wishes for a successful year!

Clyde Dougans

Principal



Scott Wallace

Vice-Principal

INFORMATION TO NOTE:

Emergency Information and Student Verification Sheets:

You will receive a student verification sheet (pink) during the next week. We ask you to complete in full and return it as soon as possible.

We are reminded daily of the need for accurate, current information about emergency contacts, legal issues, health issues and contact persons for every child.

It is imperative that we have this information to ensure we can contact you

or your delegate should there be an emergency situation or critical incident.

If you move, change work, or have cause to change "contact" persons during the year we would appreciate prompt updating of this information.

Please inform us of:

- *Custodial Issues*
- *Allergies*
- *Health Problems*
- *Suspected learning difficulties*



Chilliwack Central Elementary Community School

School Calendar 2006 – 2007



School Opens	September 5
Professional Development Day	September 22
Thanksgiving Day	October 9
Professional Development Day	October 20
Professional Development Day	November 10
Remembrance Day	November 13
Schools Close for Winter Vacation	December 22
Winter Vacation	December 25 to Jan. 5
Schools reopen	January 8
Professional Development Day	February 16
Schools close for Spring Break	March 16
Spring Break	March 19 – 23
Schools reopen after Spring Break	March 26
Good Friday	April 6
Easter Monday	April 9
Professional Development Day	April 27
Professional Development Day	May 18
Victoria Day	May 21
Last Day of Classes	June 28

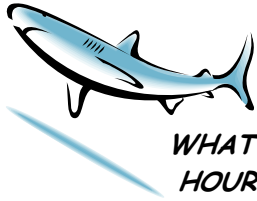
WHY DO WE DO WHAT WE DO? **CENTRAL'S ANNUAL GOALS**

Goal #1: Chilliwack Central Elementary Community School is committed to working with students, their families and supporters to **encourage improved literacy skills**, the adoption of diverse (varied) resources and strategies for success including:

- developing reading skills in the content field stressing reading for instruction, information and key words.
- embedding strategies focusing on our School District's Literacy Project to establish a common language.
- establishing new opportunities to support increased parent's /adult's training for parent volunteers and community supporters

Goal #2: Chilliwack Central Elementary Community School is **committed to the development of socially responsible citizens** as students, their families and supporters, work to create a safe, respectful, school environment affecting local and global change.

- developing leadership and service opportunities / relationships to benefit others.
embed S.H.A.R.K. common language (Safe, Helpful, Awesome, Responsible and Kind)



CENTRAL'S QUESTIONS AND ANSWERS:

(Central is home of the S.H.A.R.K.S)



WHAT ARE THE SCHOOL'S HOURS?

8:40 a.m. - First Bell

8:45 a.m. - Final Bell

Classes in Session

10:00 - 10:15 a.m. Recess
Break

11:45 a.m. - Lunch Begins

12:25 p.m. - Warning Bell /
call to class

12:30 p.m. - Classes resume

2:30 p.m.- Dismissal

Kindergarten

Mornings 8:45 - 11:07a.m.

Afternoons 12:07 - 2:30 p.m.

WHAT SCHOOL SUPPLIES ARE REQUIRED?

- *Central Elementary Community does not sell September school supplies.*
- *A detailed list of required items will be provided. It identifies needed (must have) items.*
- *Please do not substitute. If you are in doubt as to whether they are the right items DO NOT label them as stores will not take them back.*
- *If a limited number is suggested e.g. Crayons, please do not substitute a larger box as they really are not needed.*
- *Further supplies may be necessary after final class assignments are made. The "new teacher" may have a special focus or project which requires specific items.*
- *If you have any questions please call the school at 604-792-7537.*

"We have many talented and skilled individuals who could share these with our students and staff.

Have you thought about assisting as a coach, helping a team, leading a cross country running group?"

Please Call!

604-792-8537

WHAT SERVICES ARE AVAILABLE TO MY CHILDREN AND FAMILY?

Breakfast Program

Some children, on some days, come to school hungry. It may be they forgot to have breakfast, left without eating, or were in such a hurry to get here they failed to have any nutrition before leaving. Central's Breakfast Club ensures that there is light breakfast here for them in these instances. It is provided by volunteers and sponsored by the Chilliwack Rotary Club. We

anticipate this program beginning early in the term and will be letting the children know when it is available. Note: Volunteer helpers may be needed.



LUNCH PROGRAM

Central has a daily lunch program supervised by a support staff person. A monthly menu and order form is provided to students. Families are encouraged to look this over and determine if it is a program you wish to participate in. It is a welcome relief to many to avoid the daily preparation of lunches. The cost is very reasonable and should cost present a difficulty, payment options are available. Please be in touch with Miss Ward or Mrs. Gross for more information (604-792-8537).

SCHOOL AND CARE TEAM MEETINGS

We believe it truly does take a community to raise a child and work with parents, teachers and support networks to ensure we overcome challenges or obstacles to every student's success. This team approach works! Our scheduled SCHOOL BASED TEAMS may bring together parents, an administrator, learning assistance personnel (if required), counselor, teacher and often support workers. Working together these folks find solutions.

Should resources "outside" the school be required a CARE TEAM might be scheduled with a member of Public Health, Gateway, or agency in attendance to see what other path we might take.

If you have a concern about a "larger issue" around your child's learning, growth, or well being, why not talk to us about what options we can provide.

Central Elementary Community School
9435 Young Road
Chilliwack, V2P 4S7
Phone- 604-792-8537
Fax- 604-792-0104

School Information to Note!



FIRST NATIONS SUPPORT-

We are very fortunate to have two dedicated support workers providing our First Nations and Friends with a number of unique cultural and academic programs. Mrs. Kanuho-Sam is our support teacher, while Mrs. Guitierrez-Hugh is our support worker. We also have additional language instruction with district support for the aboriginal kindergarten class offered in the afternoon.

LIBRARY NEWS-

Mr. Hunt, our school teacher-librarian, provides a positive, inviting library where students can develop a passion for reading. His program offers a Nightly Reading Incentive program, "Poetry in Your Pocket," "Read to Succeed" pre-school program, "Battle of the Books", a First Nations Alter-Native Art / Literacy Event along with visiting authors and guest performers.



Our Gateway Community members also access our library. Mr. Hunt continues to build collections of quality literature inspiring reading and a love of learning. Watch for his special events!

STUDENT DIVERSITY PROGRAM-

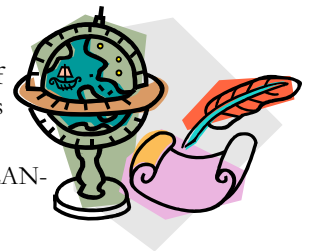
Last year one of our school's special programs was targeted to STUDENTS WITH DIVERSE LEARNING STYLES and featured on-line learning using computers. Mr. Wallace, our resident technology expert, led this group through a variety of projects with exceptional results.

We hope to expand this mandate in 2006-2007 with in-school and after school programs to benefit those who require additional or diverse supports. We will be contacting parents directly if we believe their children are a "good fit."

ENGLISH AS A SECOND LANGUAGE-

Central officially offers the School District #33's E.S.L. program on the "north side" of the freeway. Miss Amy Crosman, an experienced, qualified E.S.L. teacher explores language studies with our E.S.L. building relationships with students and their families.

A very successful program, our E.S.L. program is now complimented by the ENGLISH LANGUAGE SERVICES FOR ADULTS (ELSA) offered as a community program on our first floor.



LEARNING ASSISTANCE-

Miss Jaime Chadwick, our Learning Assistance teacher, routinely hosts extraordinary support services for children who may be challenged by some aspect of their regular program and require some further support or intervention. She works closely with the school based team, parents and district personnel to ensure adequate assessment and identification of needs are provided. Armed with this information she is able to assist teachers in developing appropriate Individualized Educational Programs modifying or adapting programs as required.

DISTRICT SUPPORTS-

Mrs. Susan Edgcombe is Central's supporting counselor and is available to our students and their families. She attends School and Care Team Meetings and may meet with some students upon parent /staff requests.

Central offers speech and language services provided by District Student Services staff. Ms. Carolyn Gibbs is our District Support person and can be reached at (604) 792-1321.



Remember to begin the year with **BIKE SAFETY**. Students need a helmet and good lock to ensure safety and security. It will make a difference!